



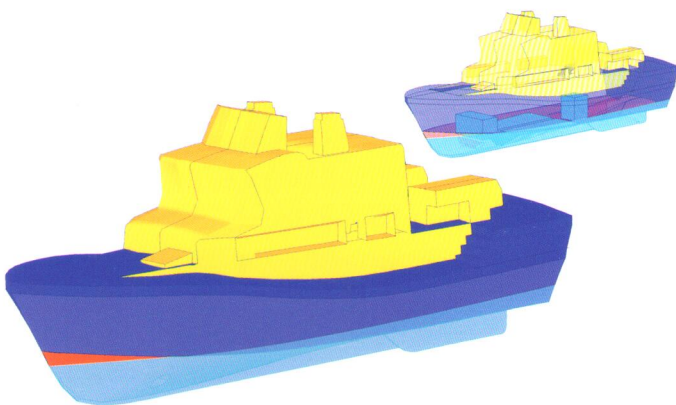
# MAXSURF NEWS

Integrated Naval Architecture & Ship Construction Software

November 2002 Newsletter

## Maxsurf Version 9.5 Released

Formation Design Systems is pleased to announce the release of Maxsurf v9.5. This upgrade is part of our continuing research and development program to deliver the state of the art in naval architecture software. If you are a member of our subscription program, you will automatically be receiving your upgrade CD. Should you wish to join the subscription program, please see the details listed on the back page of this newsletter.



Hydromax 9.5 includes rendering of tanks and compartments through a transparent hull  
Lifeboat model courtesy of RNLI.

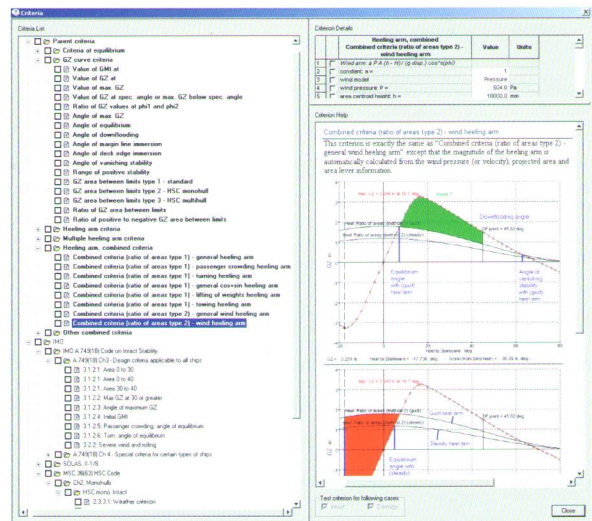
### Hydromax - Advanced Stability Criteria

Some time ago we identified a need for stability software that was able to compute and assess vessels against a diverse range of stability criteria. However, it was also considered essential that the system have an easy to use and intuitive user interface. Since mid-2001 Formation's developers have been working on this problem. Eight months and twenty-five thousand lines of code later, the development team have delivered a comprehensive and completely customisable approach to all kinds of stability criteria. The new capabilities feature a single dialog to control all the stability criteria. This makes it quick and easy to set which criteria should be tested and to change the parameters of the individual criteria.

Users can create their own custom sets of criteria by selecting from a wide range of standard criteria types. In the new criteria results table, more intermediate data regarding the calculations

is available. Criteria may be identified as intact or damage criteria (or both). This ensures that the correct criteria are evaluated and displayed during normal and batch analysis. Criteria results are automatically tabulated after a large angle stability or equilibrium analysis. Criteria may also be changed and checked without having to re-run the analysis.

Users may select either a verbose or compact format for output. The verbose format gives details of all the values calculated during the evaluation of each criterion; the compact format simply states whether the criterion was passed or failed. Help information relating to the use and parameters of each criterion is displayed in the dialog. The whole dialog may be resized and a vertical and horizontal slider can be used to resize the main dialog controls.



Stability Criteria can be easily customised using the new dialog

A wide range of parent criteria are provided allowing users to build up new sets of criteria from the parent forms. A wide range of standard criteria checks are also predefined including IMO, SOLAS, HSC, STIX, MARPOL, USL and US Navy. This new approach to criteria provides an exceptionally flexible yet easy to use system for ensuring compliance.